



Nirmala Alpha Gourava and Modified Nirmala Alpha Gourava Indices of Certain Dendrimers

V.R.Kulli

Department of Mathematics, Gulbarga University, Gulbarga 585106, India

ARTICLE INFO	ABSTRACT
<p>Published Online: 24 May 2024 Corresponding Author: V.R.Kulli</p>	<p>In this paper, we introduce the Nirmalaalpha Gourava and modified Nirmala alpha Gourava indices and their corresponding exponentials of a graph. Also we compute the Nirmala alpha Gourava and modified Nirmala alpha Gourava indices of four families of dendrimers.</p>
<p>KEYWORDS: Nirmala alpha Gourava index, modified Nirmala alpha Gourava index, dendrimer.</p>	

I. INTRODUCTION

The graph $G = (V(G), E(G))$ is a simple connected graph with vertex set $V(G)$ and edge set $E(G)$. For undefined term and notation, we refer the book [1].

A molecular graph is a graph in which the vertices correspond to the atoms and the edges to the bonds of a molecule. Several topological or graph indices [2] have been considered in Chemical Science and have found some applications, in *QSPR/QSAR* study, see [3, 4].

The Nirmala index [5] of a molecular graph G is defined as

$$N(G) = \sum_{uv \in E(G)} \sqrt{d_G(u) + d_G(v)}.$$

Recently, some Nirmala indices were studied in [6-20].

The first alpha Gourava index was defined by Kulli in [21] as

$$AGO(G) = \sum_{uv \in E(G)} [d_G(u)^2 + d_G(v)^2 + d_G(u)d_G(v)].$$

Recently, some Gourava indices were studied in [22-39].

Motivated by Nirmala and first alpha Gourava indices, we introduce the Nirmala alpha Gourava index of a graph G as follows:

The Nirmala alpha Gourava index of a molecular graph G is defined as

$$NAGO(G)$$

$$= \sum_{uv \in E(G)} \sqrt{d_G(u)^2 + d_G(v)^2 + d_G(u)d_G(v)}.$$

Considering the Nirmala alpha Gourava index, we define the Nirmala alpha Gourava exponential of a graph G as

$$NAGO(G, x) = \sum_{uv \in E(G)} x^{\sqrt{d_G(u)^2 + d_G(v)^2 + d_G(u)d_G(v)}}.$$

We define the modified Nirmala alpha Gourava index of a graph G as

$${}^m NAGO(G) = \sum_{uv \in E(G)} \frac{1}{\sqrt{d_G(u)^2 + d_G(v)^2 + d_G(u)d_G(v)}}.$$

Considering the modified Nirmala alpha Gourava index, we introduce the modified Nirmala alpha Gourava exponential of a graph G and defined it as

$${}^m NAGO(G, x) = \sum_{uv \in E(G)} x^{\frac{1}{\sqrt{d_G(u)^2 + d_G(v)^2 + d_G(u)d_G(v)}}}.$$

Recently, some topological indices were studied in [40, 41, 42, 43].

In this study, we compute the Nirmala alpha Gourava and modified Nirmala alpha Gourava indices of four families of dendrimers.

2. RESULTS FOR PORPHYRIN DENDRIMER $D_N P_N$

We consider the family of porphyrin dendrimers. This family of dendrimers is denoted by D_nP_n . The molecular graph of D_nP_n is shown in Figure 1.

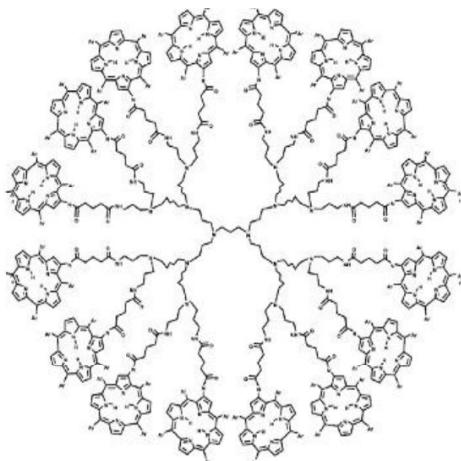


Figure 1. The molecular graph of D_nP_n

Let G be the molecular graph of D_nP_n . By calculation, we find that G has $96n - 10$ vertices and $105n - 11$ edges. In D_nP_n , there are six types of edges based on degrees of end vertices of each edge as given in Table 1.

Table 1. Edge partition of D_nP_n

$d_G(u), d_G(v) \setminus uv \in E(G)$	Number of edges
(1, 3)	$2n$
(1, 4)	$24n$
(2, 2)	$10n - 5$
(2, 3)	$48n - 6$
(3, 3)	$13n$
(3, 4)	$8n$

Theorem 1. Let D_nP_n be the family of porphyrin dendrimers. Then

$$NAGO(G) = 2n\sqrt{13} + 24n\sqrt{21} + 10n\sqrt{12} + 48n\sqrt{19} + 13n\sqrt{27} + 8n\sqrt{37} - 5\sqrt{12} - 6\sqrt{19}.$$

Proof: From definition and by using Table 1, we deduce

$$\begin{aligned} NAGO(G) &= \sum_{uv \in E(G)} \sqrt{d_G(u)^2 + d_G(v)^2 + d_G(u)d_G(v)} \\ &= 2n\sqrt{1^2 + 3^2 + (1 \times 3)} + 24n\sqrt{1^2 + 4^2 + (1 \times 4)} \\ &\quad + (10n - 5)\sqrt{2^2 + 2^2 + (2 \times 2)} \\ &\quad + (48n - 6)\sqrt{2^2 + 3^2 + (2 \times 3)} \\ &\quad + 13n\sqrt{3^2 + 3^2 + (3 \times 3)} + 8n\sqrt{3^2 + 4^2 + (3 \times 4)} \\ &= 2n\sqrt{13} + 24n\sqrt{21} + 10n\sqrt{12} + 48n\sqrt{19} \end{aligned}$$

$$+ 13n\sqrt{27} + 8n\sqrt{37} - 5\sqrt{12} - 6\sqrt{19}.$$

Theorem 2. Let D_nP_n be the family of porphyrin dendrimers. Then

$$NAGO(G, x) = 2nx^{\sqrt{13}} + 24nx^{\sqrt{21}} + (10n - 5)x^{\sqrt{12}} + (48n - 6)x^{\sqrt{19}} + 13nx^{\sqrt{27}} + 8nx^{\sqrt{37}}.$$

Proof: From definition and by using Table 1, we deduce

$$\begin{aligned} NAGO(G, x) &= \sum_{uv \in E(G)} x^{\sqrt{d_G(u)^2 + d_G(v)^2 + d_G(u)d_G(v)}} \\ &= 2nx^{\sqrt{1^2 + 3^2 + (1 \times 3)}} + 24nx^{\sqrt{1^2 + 4^2 + (1 \times 4)}} \\ &\quad + (10n - 5)x^{\sqrt{2^2 + 2^2 + (2 \times 2)}} + (48n - 6)x^{\sqrt{2^2 + 3^2 + (2 \times 3)}} \\ &\quad + 13nx^{\sqrt{3^2 + 3^2 + (3 \times 3)}} + 8nx^{\sqrt{3^2 + 4^2 + (3 \times 4)}} \\ &= 2nx^{\sqrt{13}} + 24nx^{\sqrt{21}} + (10n - 5)x^{\sqrt{12}} \\ &\quad + (48n - 6)x^{\sqrt{19}} + 13nx^{\sqrt{27}} + 8nx^{\sqrt{37}}. \end{aligned}$$

Theorem 3. The modified Nirmala alpha Gourava index of D_nP_n is

$$\begin{aligned} {}^m NAGO(G) &= \frac{2n}{\sqrt{13}} + \frac{24n}{\sqrt{21}} + \frac{10n - 5}{\sqrt{12}} \\ &\quad + \frac{48n - 6}{\sqrt{19}} + \frac{13n}{\sqrt{27}} + \frac{8n}{\sqrt{37}}. \end{aligned}$$

Proof: We have

$$\begin{aligned} {}^m NAGO(G) &= \sum_{uv \in E(G)} \frac{1}{\sqrt{d_G(u)^2 + d_G(v)^2 + d_G(u)d_G(v)}} \\ &= \frac{2n}{\sqrt{1^2 + 3^2 + (1 \times 3)}} + \frac{24n}{\sqrt{1^2 + 4^2 + (1 \times 4)}} \\ &\quad + \frac{10n - 5}{\sqrt{2^2 + 2^2 + (2 \times 2)}} + \frac{48n - 6}{\sqrt{2^2 + 3^2 + (2 \times 3)}} \\ &\quad + \frac{13n}{\sqrt{3^2 + 3^2 + (3 \times 3)}} + \frac{8n}{\sqrt{3^2 + 4^2 + (3 \times 4)}} \\ &= \frac{2n}{\sqrt{13}} + \frac{24n}{\sqrt{21}} + \frac{10n - 5}{\sqrt{12}} + \frac{48n - 6}{\sqrt{19}} + \frac{13n}{\sqrt{27}} + \frac{8n}{\sqrt{37}}. \end{aligned}$$

Theorem 4. The modified Nirmala alpha Gourava exponential of D_nP_n is given by

$$\begin{aligned} {}^m NAGO(G, x) &= 2nx^{\frac{1}{\sqrt{13}}} + 24nx^{\frac{1}{\sqrt{21}}} + (10n - 5)x^{\frac{1}{\sqrt{12}}} \\ &\quad + (48n - 6)x^{\frac{1}{\sqrt{19}}} + 13nx^{\frac{1}{\sqrt{27}}} + 8nx^{\frac{1}{\sqrt{37}}}. \end{aligned}$$

Proof: We have

$${}^m NAGO(G, x) = \sum_{uv \in E(G)} x^{\frac{1}{\sqrt{d_G(u)^2 + d_G(v)^2 + d_G(u)d_G(v)}}}$$

$$\begin{aligned}
 &= 2nx\sqrt{\frac{1}{1^2+3^2+(1\times3)}} + 24nx\sqrt{\frac{1}{1^2+4^2+(1\times4)}} \\
 &+ (10n-5)x\sqrt{\frac{1}{2^2+2^2+(2\times2)}} + (48n-6)x\sqrt{\frac{1}{2^2+3^2+(2\times3)}} \\
 &+ 13nx\sqrt{\frac{1}{3^2+3^2+(3\times3)}} + 8nx\sqrt{\frac{1}{3^2+4^2+(3\times4)}} \\
 &= 2nx\sqrt{13} + 24nx\sqrt{21} + (10n-5)x\sqrt{12} \\
 &+ (48n-6)x\sqrt{19} + 13nx\sqrt{27} + 8nx\sqrt{37}.
 \end{aligned}$$

3. RESULTS FOR PROPYL ETHER IMINE DENDRIMER PETIM

We consider the family of propyl ether imine dendrimers. This family of dendrimers is denoted by *PETIM*. The molecular graph of *PETIM* is depicted in Figure 2.

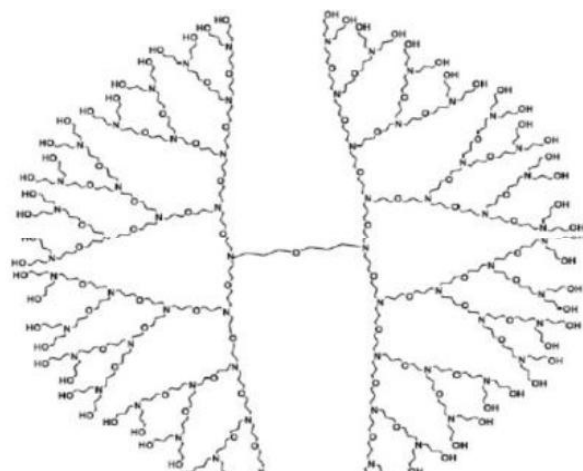


Figure 2. The molecular graph of *PETIM*

Let *G* be the molecular graph of *PETIM*. By calculation, we find that *G* has $24 \times 2^n - 23$ vertices and $24 \times 2^n - 24$ edges. In *PETIM*, there are three types of edges based on degrees of end vertices of each edge as given in Table 2.

Table 2. Edge partition of *PETIM*

$d_G(u), d_G(v) \setminus uv \in E(G)$	Number of edges
(1, 2)	2×2^n
(2, 2)	$16 \times 2^n - 18$
(2, 3)	$6 \times 2^n - 6$

Theorem 5. Let *PETIM* be the family of propyl ether imine dendrimers. Then

$$\begin{aligned}
 NAGO(G) &= 2 \times 2^n \sqrt{7} + 16 \times 2^n \sqrt{12} \\
 &+ 6 \times 2^n \sqrt{19} - 18\sqrt{12} - 6\sqrt{19}.
 \end{aligned}$$

Proof: From definition and by using Table 2, we deduce

$$NAGO(G)$$

$$\begin{aligned}
 &= \sum_{uv \in E(G)} \sqrt{d_G(u)^2 + d_G(v)^2 + d_G(u)d_G(v)} \\
 &= 2 \times 2^n \sqrt{1^2 + 2^2 + (1 \times 2)} \\
 &+ (16 \times 2^n - 18) \sqrt{2^2 + 2^2 + (2 \times 2)} \\
 &+ (6 \times 2^n - 6) \sqrt{2^2 + 3^2 + (2 \times 3)} \\
 &= 2 \times 2^n \sqrt{7} + 16 \times 2^n \sqrt{12} \\
 &+ 6 \times 2^n \sqrt{19} - 18\sqrt{12} - 6\sqrt{19}.
 \end{aligned}$$

Theorem 6. Let *PETIM* be the family of propyl ether imine dendrimers. Then

$$\begin{aligned}
 NAGO(G, x) &= 2 \times 2^n x^{\sqrt{7}} + 16 \times 2^n x^{\sqrt{12}} \\
 &+ 6 \times 2^n x^{\sqrt{19}} - 18x^{\sqrt{12}} - 6x^{\sqrt{19}}.
 \end{aligned}$$

Proof: From definition and by using Table 2, we deduce

$$\begin{aligned}
 NAGO(G, x) &= \sum_{uv \in E(G)} x^{\sqrt{d_G(u)^2 + d_G(v)^2 + d_G(u)d_G(v)}} \\
 &= 2 \times 2^n x^{\sqrt{1^2 + 2^2 + (1 \times 2)}} \\
 &+ (16 \times 2^n - 18) x^{\sqrt{2^2 + 2^2 + (2 \times 2)}} \\
 &+ (6 \times 2^n - 6) x^{\sqrt{2^2 + 3^2 + (2 \times 3)}} \\
 &= 2 \times 2^n x^{\sqrt{7}} + 16 \times 2^n x^{\sqrt{12}} \\
 &+ 6 \times 2^n x^{\sqrt{19}} - 18x^{\sqrt{12}} - 6x^{\sqrt{19}}.
 \end{aligned}$$

Theorem 7. The modified Nirmala alpha Gourava index of *PETIM* is

$$\begin{aligned}
 {}^m NAGO(G) &= \frac{2 \times 2^n}{\sqrt{7}} + \frac{16 \times 2^n}{\sqrt{12}} \\
 &+ \frac{6 \times 2^n}{\sqrt{19}} - \frac{18}{\sqrt{12}} - \frac{6}{\sqrt{19}}.
 \end{aligned}$$

Proof: We have

$$\begin{aligned}
 {}^m NAGO(G) &= \sum_{uv \in E(G)} \frac{1}{\sqrt{d_G(u)^2 + d_G(v)^2 + d_G(u)d_G(v)}} \\
 &= \frac{2 \times 2^n}{\sqrt{1^2 + 2^2 + (1 \times 2)}} + \frac{16 \times 2^n - 18}{\sqrt{2^2 + 2^2 + (2 \times 2)}} \\
 &+ \frac{6 \times 2^n - 6}{\sqrt{2^2 + 3^2 + (2 \times 3)}} \\
 &= \frac{2 \times 2^n}{\sqrt{7}} + \frac{16 \times 2^n}{\sqrt{12}} + \frac{6 \times 2^n}{\sqrt{19}} - \frac{18}{\sqrt{12}} - \frac{6}{\sqrt{19}}.
 \end{aligned}$$

Theorem 8. The modified Nirmala alpha Gourava exponential of *PETIM* is given by

$${}^m NAGO(G, x) = 2 \times 2^n x^{\frac{1}{\sqrt{7}}} + (16 \times 2^n - 18) x^{\frac{1}{\sqrt{12}}} + (6 \times 2^n - 6) x^{\frac{1}{\sqrt{19}}}.$$

Proof: We have

$$\begin{aligned} {}^m NAGO(G, x) &= \sum_{uv \in E(G)} x^{\frac{1}{\sqrt{d_G(u)^2 + d_G(v)^2 + d_G(u)d_G(v)}}} \\ &= 2 \times 2^n x^{\frac{1}{\sqrt{1^2 + 2^2 + (1 \times 2)}}} \\ &+ (16 \times 2^n - 18) x^{\frac{1}{\sqrt{2^2 + 2^2 + (2 \times 2)}}} \\ &+ (6 \times 2^n - 6) x^{\frac{1}{\sqrt{2^2 + 3^2 + (2 \times 3)}}} \\ &= 2 \times 2^n x^{\frac{1}{\sqrt{7}}} + (16 \times 2^n - 18) x^{\frac{1}{\sqrt{12}}} \\ &+ (6 \times 2^n - 6) x^{\frac{1}{\sqrt{19}}}. \end{aligned}$$

4. Results for Poly Ethylene Amide Amine Dendrimer *PETAA*

We consider the family of poly ethylene amide amine dendrimers. This family of dendrimers is denoted by *PETAA*. The molecular graph of *PETAA* is presented in Figure 3.

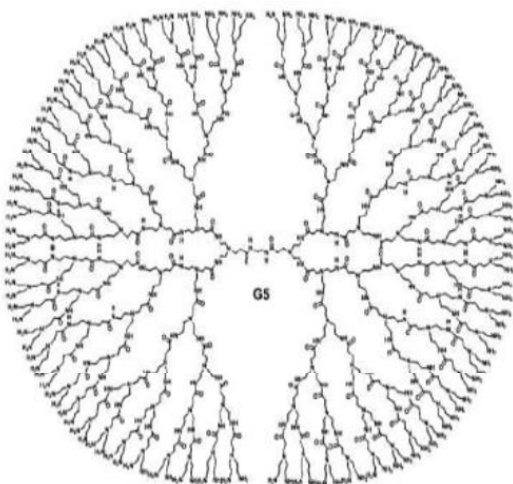


Figure 3. The molecular graph of *PETAA*

Let *G* be the molecular graph of *PETAA*. By calculation, we find that *G* has $44 \times 2^n - 18$ vertices and $44 \times 2^n - 19$ edges. In *PETAA*, there are three types of edges based on degrees of end vertices of each edge as given in Table 3.

Table 3. Edge partition of *PETAA*

$d_G(u), d_G(v) \setminus uv \in E(G)$	Number of edges
(1, 2)	4×2^n
(1, 3)	$4 \times 2^n - 2$
(2, 2)	$16 \times 2^n - 8$
(2, 3)	$20 \times 2^n - 9$

Theorem 9. Let *PETAA* be the family of poly ethylene amide amine dendrimers. Then

$$NAGO(G) = 4 \times 2^n \sqrt{7} + 4 \times 2^n \sqrt{13} + 16 \times 2^n \sqrt{12} + 20 \times 2^n \sqrt{19} - 2\sqrt{13} - 8\sqrt{12} - 9\sqrt{19}.$$

Proof: From definition and by using Table 3, we deduce

$$\begin{aligned} NAGO(G) &= \sum_{uv \in E(G)} \sqrt{d_G(u)^2 + d_G(v)^2 + d_G(u)d_G(v)} \\ &= 4 \times 2^n \sqrt{1^2 + 2^2 + (1 \times 2)} \\ &+ (4 \times 2^n - 2) \sqrt{1^2 + 3^2 + (1 \times 3)} \\ &+ (16 \times 2^n - 8) \sqrt{2^2 + 2^2 + (2 \times 2)} \\ &+ (20 \times 2^n - 9) \sqrt{2^2 + 3^2 + (2 \times 3)} \\ &= 4 \times 2^n \sqrt{7} + 4 \times 2^n \sqrt{13} + 16 \times 2^n \sqrt{12} \\ &+ 20 \times 2^n \sqrt{19} - 2\sqrt{13} - 8\sqrt{12} - 9\sqrt{19}. \end{aligned}$$

Theorem 10. Let *PETAA* be the family of poly ethylene amide amine dendrimers. Then

$${}^m NAGO(G, x) = 4 \times 2^n x^{\sqrt{7}} + (4 \times 2^n - 2) x^{\sqrt{13}} + (16 \times 2^n - 8) x^{\sqrt{12}} + (20 \times 2^n - 9) x^{\sqrt{19}}.$$

Proof: From definition and by using Table 3, we deduce

$$\begin{aligned} {}^m NAGO(G, x) &= \sum_{uv \in E(G)} x^{\sqrt{d_G(u)^2 + d_G(v)^2 + d_G(u)d_G(v)}} \\ &= 4 \times 2^n x^{\sqrt{1^2 + 2^2 + (1 \times 2)}} + (4 \times 2^n - 2) x^{\sqrt{1^2 + 3^2 + (1 \times 3)}} \\ &+ (16 \times 2^n - 8) x^{\sqrt{2^2 + 2^2 + (2 \times 2)}} + (20 \times 2^n - 9) x^{\sqrt{2^2 + 3^2 + (2 \times 3)}} \\ &= 4 \times 2^n x^{\sqrt{7}} + (4 \times 2^n - 2) x^{\sqrt{13}} \\ &+ (16 \times 2^n - 8) x^{\sqrt{12}} + (20 \times 2^n - 9) x^{\sqrt{19}}. \end{aligned}$$

Theorem 11. The modified Nirmala alpha Gourava index of *PETAA* is

$${}^m NAGO(G) = \frac{4 \times 2^n}{\sqrt{7}} + \frac{4 \times 2^n - 2}{\sqrt{13}} + \frac{16 \times 2^n - 8}{\sqrt{12}} + \frac{20 \times 2^n - 9}{\sqrt{19}}.$$

Proof: We have

$${}^m NAGO(G)$$

$$\begin{aligned}
 &= \sum_{uv \in E(G)} \frac{1}{\sqrt{d_G(u)^2 + d_G(v)^2 + d_G(u)d_G(v)}} \\
 &= \frac{4 \times 2^n}{\sqrt{1^2 + 2^2 + (1 \times 2)}} + \frac{4 \times 2^n - 2}{\sqrt{1^2 + 3^2 + (1 \times 3)}} \\
 &+ \frac{16 \times 2^n - 8}{\sqrt{2^2 + 2^2 + (2 \times 2)}} + \frac{20 \times 2^n - 9}{\sqrt{2^2 + 3^2 + (2 \times 3)}} \\
 &= \frac{4 \times 2^n}{\sqrt{7}} + \frac{4 \times 2^n - 2}{\sqrt{13}} + \frac{16 \times 2^n - 8}{\sqrt{12}} + \frac{20 \times 2^n - 9}{\sqrt{19}}.
 \end{aligned}$$

Theorem 12. The modified Nirmala alpha Gourava exponential of *PETA*A is given by

$$\begin{aligned}
 {}^m NAGO(G, x) &= 4 \times 2^n x^{\frac{1}{\sqrt{7}}} + (4 \times 2^n - 2) x^{\frac{1}{\sqrt{13}}} \\
 &+ (16 \times 2^n - 8) x^{\frac{1}{\sqrt{12}}} + (20 \times 2^n - 9) x^{\frac{1}{\sqrt{19}}}.
 \end{aligned}$$

Proof: We have

$$\begin{aligned}
 {}^m NAGO(G, x) &= \sum_{uv \in E(G)} x^{\frac{1}{\sqrt{d_G(u)^2 + d_G(v)^2 + d_G(u)d_G(v)}}} \\
 &= 4 \times 2^n x^{\frac{1}{\sqrt{1^2 + 2^2 + (1 \times 2)}}} + (4 \times 2^n - 2) x^{\frac{1}{\sqrt{1^2 + 3^2 + (2 \times 3)}}} \\
 &+ (16 \times 2^n - 8) x^{\frac{1}{\sqrt{2^2 + 2^2 + (2 \times 2)}}} \\
 &+ (20 \times 2^n - 9) x^{\frac{1}{\sqrt{2^2 + 3^2 + (2 \times 3)}}} \\
 &= 4 \times 2^n x^{\frac{1}{\sqrt{7}}} + (4 \times 2^n - 2) x^{\frac{1}{\sqrt{13}}} \\
 &+ (16 \times 2^n - 8) x^{\frac{1}{\sqrt{12}}} + (20 \times 2^n - 9) x^{\frac{1}{\sqrt{19}}}.
 \end{aligned}$$

5. RESULTS FOR ZINC PROPHYRIN DENDRIMER *DPZ_n*

We consider the family of zinc prophyridendrimers. This family of dendrimers is denoted by *DPZ_n*, where *n* is the steps of growth in this type of dendrimers. The molecular graph of *DPZ_n* is shown in Figure 4.

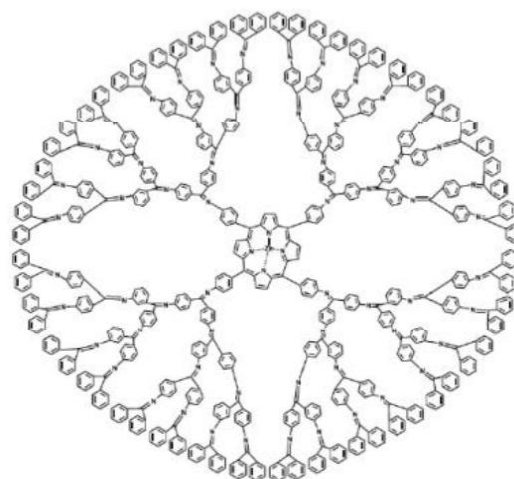


Figure 4. The molecular graph of *DPZ_n*

Let *G* be the molecular graph of *DPZ_n*. By calculation, we obtain that *G* has $56 \times 2^n - 7$ vertices $64 \times 2^n - 4$ edges. In *DPZ_n*, there are four types of edges based on degrees of end vertices of each edge as given in Table 4.

Table 4. Edge partition of *DPZ_n*

$d_G(u), d_G(v) \setminus uv \in E(G)$	Number of edges
(2, 2)	$16 \times 2^n - 4$
(2, 3)	$40 \times 2^n - 16$
(3, 3)	$8 \times 2^n + 12$
(3, 4)	4

Theorem 13. Let *DPZ_n* be the family of zinc prophyridendrimers. Then

$$\begin{aligned}
 NAGO(G) &= 16 \times 2^n \sqrt{12} + 40 \times 2^n \sqrt{19} + 8 \times 2^n \sqrt{27} \\
 &- 4\sqrt{12} - 16\sqrt{19} + 12\sqrt{27} + 4\sqrt{37}.
 \end{aligned}$$

Proof: From definition and by using Table 4, we deduce *NAGO(G)*

$$\begin{aligned}
 &= \sum_{uv \in E(G)} \sqrt{d_G(u)^2 + d_G(v)^2 + d_G(u)d_G(v)} \\
 &= (16 \times 2^n - 4) \sqrt{2^2 + 2^2 + (2 \times 2)} \\
 &+ (40 \times 2^n - 16) \sqrt{2^2 + 3^2 + (2 \times 3)} \\
 &+ (8 \times 2^n + 12) \sqrt{3^2 + 3^2 + (3 \times 3)} \\
 &+ 4\sqrt{3^2 + 4^2 + (3 \times 4)} \\
 &= 16 \times 2^n \sqrt{12} + 40 \times 2^n \sqrt{19} + 8 \times 2^n \sqrt{27} \\
 &- 4\sqrt{12} - 16\sqrt{19} + 12\sqrt{27} + 4\sqrt{37}.
 \end{aligned}$$

Theorem 14. Let *DPZ_n* be the family of zinc prophyridendrimers. Then

$$\begin{aligned}
 NAGO(G, x) &= (16 \times 2^n - 4) x^{\sqrt{12}} \\
 &+ (40 \times 2^n - 16) x^{\sqrt{19}} + (8 \times 2^n + 12) x^{\sqrt{27}} + 4x^{\sqrt{37}}.
 \end{aligned}$$

Proof: From definition and by using Table 4, we deduce

$$\begin{aligned} NAGO(G, x) &= \sum_{uv \in E(G)} x^{\sqrt{d_G(u)^2 + d_G(v)^2 + d_G(u)d_G(v)}} \\ &= (16 \times 2^n - 4)x^{\sqrt{2^2 + 2^2 + (2 \times 2)}} \\ &+ (40 \times 2^n - 16)x^{\sqrt{2^2 + 3^2 + (2 \times 3)}} \\ &+ (8 \times 2^n + 12)x^{\sqrt{3^2 + 3^2 + (3 \times 3)}} + 4x^{\sqrt{3^2 + 4^2 + (3 \times 4)}} \\ &= (16 \times 2^n - 4)x^{\sqrt{12}} + (40 \times 2^n - 16)x^{\sqrt{19}} \\ &+ (8 \times 2^n + 12)x^{\sqrt{27}} + 4x^{\sqrt{37}}. \end{aligned}$$

Theorem 15. The modified Nirmala alpha Gourava index of DPZ_n is

$$\begin{aligned} {}^m NAGO(G) &= \frac{16 \times 2^n - 4}{\sqrt{12}} + \frac{40 \times 2^n - 16}{\sqrt{19}} \\ &+ \frac{8 \times 2^n + 12}{\sqrt{27}} + \frac{4}{\sqrt{37}}. \end{aligned}$$

Proof: We have

$$\begin{aligned} {}^m NAGO(G) &= \sum_{uv \in E(G)} \frac{1}{\sqrt{d_G(u)^2 + d_G(v)^2 + d_G(u)d_G(v)}} \\ &= \frac{16 \times 2^n - 4}{\sqrt{2^2 + 2^2 + (2 \times 2)}} + \frac{40 \times 2^n - 16}{\sqrt{2^2 + 3^2 + (2 \times 3)}} \\ &+ \frac{8 \times 2^n + 12}{\sqrt{3^2 + 3^2 + (3 \times 3)}} + \frac{4}{\sqrt{3^2 + 4^2 + (3 \times 4)}} \\ &= \frac{16 \times 2^n - 4}{\sqrt{12}} + \frac{40 \times 2^n - 16}{\sqrt{19}} + \frac{8 \times 2^n + 12}{\sqrt{27}} + \frac{4}{\sqrt{37}}. \end{aligned}$$

Theorem 16. The modified Nirmala alpha Gourava exponential of DPZ_n is given by

$$\begin{aligned} {}^m NAGO(G, x) &= (16 \times 2^n - 4)x^{\frac{1}{\sqrt{12}}} \\ &+ (40 \times 2^n - 16)x^{\frac{1}{\sqrt{19}}} + (8 \times 2^n + 12)x^{\frac{1}{\sqrt{27}}} + 4x^{\frac{1}{\sqrt{37}}}. \end{aligned}$$

Proof: We have

$$\begin{aligned} {}^m NAGO(G, x) &= \sum_{uv \in E(G)} x^{\frac{1}{\sqrt{d_G(u)^2 + d_G(v)^2 + d_G(u)d_G(v)}}} \\ &= (16 \times 2^n - 4)x^{\frac{1}{\sqrt{2^2 + 2^2 + (2 \times 2)}}} \\ &+ (40 \times 2^n - 16)x^{\frac{1}{\sqrt{2^2 + 3^2 + (2 \times 3)}}} \\ &+ (8 \times 2^n + 12)x^{\frac{1}{\sqrt{3^2 + 3^2 + (3 \times 3)}}} \\ &+ 4x^{\frac{1}{\sqrt{3^2 + 4^2 + (3 \times 4)}}} \end{aligned}$$

$$\begin{aligned} &= (16 \times 2^n - 4)x^{\frac{1}{\sqrt{12}}} + (40 \times 2^n - 16)x^{\frac{1}{\sqrt{19}}} \\ &+ (8 \times 2^n + 12)x^{\frac{1}{\sqrt{27}}} + 4x^{\frac{1}{\sqrt{37}}}. \end{aligned}$$

6. CONCLUSION

In this paper, a novel invariant is considered which is the Nirmala alpha Gourava index. The Nirmala alpha Gourava and modified Nirmala alpha Gourava indices of four families of dendrimers are determined.

REFERENCES

1. V.R.Kulli, *College Graph Theory*, Vishwa International Publications, Gulbarga, India (2012).
2. V.R. Kulli, Graphs indices, in *Hand Book of Research in Advanced Applications of Graph Theory in Modern Society*, M.Pal, S.Samanta, A.Pal (eds.) IGI Global, USA(2020) 66-91.
3. S.Wagner and H.Wang, *Introduction Chemical Graph Theory*, Boca Raton, CRC Press, (2018).
4. M.V.Diudea (ed.) *QSPR/QSAR Studies by Molecular Descriptors*, NOVA New York, (2001).
5. V.R.Kulli, Nirmala index, *International Journal of Mathematics Trends and Technology*, 67(3) (2021) 8-12. doi: 10.14445/22315373/IJMTT-V67I3P502.
6. V.R.Kulli, GouravaNirmala indices of certain nanostructures, *International Journal of Mathematical Archive*, 14(2) (2023) 1-9.
7. S.Das and S.Rai, On closed derivation formulas of the Nirmala indices from the M-polynomial of a graph, *Journal of the Indian Chemical Society*, 100(6) (2023) 101017.
8. N.Ghanbani, On the Nirmala index of graphs, *SSRN* <http://dx.doi.org/10.2139/ssrn.3984073>.
9. A.H.Karim, N.E.Arif and A.M.Ramadan, The M-Polynomial and Nirmala index of certain composite graphs, *Tikrit Journal of Pure Science*, 27(3) (2022) 92-101.
10. V.R.Kulli, Domination Nirmala indices of graphs, *International Journal of Mathematics and Computer Research*, 11(6) (2023) 3497-3502.
11. V.R.Kulli, Multiplicative domination Nirmala indices of graphs, *International Journal of Mathematics and its Applications*, 11(3) (2023) 11-20.
12. V.R.Kulli, Irregularity domination Nirmala and domination Sombor indices of certain drugs, *International Journal of Mathematical Archive*, 14(8) (2023) 1-7.
13. V.R.Kulli, Computation of E-Bnhatti Nirmala indices of tetrameric 1,3-Adamantane, *Annals of Pure and Applied Mathematics*, 26(2) (2022) 119-124.

14. V.R.Kulli, Reverse Nirmala index, *International Journal of Engineering Sciences and Research Technology*, 10(8) (2022) 12-19.
15. V.R.Kulli, Revan Nirmala index, *Annals of Pure and Applied Mathematics*, 26(1) (2022) 7-13.
16. V.R.Kulli, Multiplicative Nirmala and Banhatti-Nirmala indices of certain nanostar dendrimers, *International Journal of Mathematical Archive*, 13(10) (2022) 8-15.
17. V.R.Kulli, Temperature Sombor and Temperature Nirmala indices, *International Journal of Mathematics and Computer Research*, 10(9) (2022) 2910-2915.
18. V.R.Kulli, Edge versions of Sombor and Nirmala indices of some nanotubes and nanotori, *International Journal of Mathematics and Computer Research*, 11(3) (2023) 3305-3310.
19. N.K.Raut and G.K.Sanap, On Nirmala indices of carbon nanoconeC4[2], *IOSR Journal of Mathematics*, 18(4) (2022) 10-15.
20. S.OguzUnal, Nirmala index over a graph of a monogenic semi groups, *Bulletin of International Virtual Institute*, 12(1) (2022) 119-124.
21. V.R.Kulli, On alpha and gamma Gourava indices, *International Journal of Mathematics and Computer Research*, 12(4) (2024) 4139-4144..
22. M.Aruvi, J.M.Joseph and E.Ramganes, The second Gourava index of some graph products, *Advances in Mathematics: Scientific Journal*, 9(12) (2020) 10241-10249.
23. G.N.Adithya, N.D.Soner and M.Kirankumar, Gourava indices for Jahangir graph and phase transfer catalyst, *Journal of Emerging Technologies and Innovative Research*, 10(6) (2023) f394-f399.
24. B.Basavanagoud and S.Policepatil, Chemical applicability of Gourava and hyper Gourava indices, *Nanosystems: Physics, Chemistry, Mathematics*, 12(2) (2021) 142-150.
25. F.Dayan, M.Javaid and M.A.Rehman, On leap Gourava indices of some wheel related graphs, *Scientific Inquiry and review*, 2 (4) (2018) 14-24.
26. S.Kanwal, M.Imtiaz, N.Idrees, A.Manzoor and A.Afzal, Certain topological indices and polynomials for the semi total point graph and line graph of semi total point graph for Dutch windmill graph, *Indonesian Journal of Combinatorics*, 3(2) (2019) 63-78.
27. S.Kanwal, S.Shang, M.K.Siddiqui, T.S.Shaikh, A.Afzal and A.ATuah, On analysis of topological aspects for subdivision of Kragujevac tree networks, *Mathematical Problems in Engineering*, vol. 2021, article ID 9082320, 15 pages.
28. V.R.Kulli, The Gourava indices and coindices of graphs, *Annals of Pure and Applied Mathematics*, 14(1), (2017) 33-38. DOI: <http://dx.doi.org/10.22457/apam.v14n1a4>
29. V.R.Kulli, G.N.Adithya and N.D.Soner, Gourava indices of certain windmill graphs, *International Journal of Mathematics Trends and Technology*, 68(9) (2022) 51-59. <https://doi.org/10.14445/22315373/IJMTT-V68I9P508>.
30. V.R.Kulli, Gourava Sombor indices, *International Journal of Engineering Sciences & Research Technology*, 11(11) (2022) 29-38. DOI: 10.5281/zenodo.7505774.
31. V.R. Kulli, Gourava Nirmala indices of certain nanostructures, *International Journal of Mathematical Archive*, 14(2) (2023) 1-9.
32. V.R.Kulli, Gourava domination indices of graphs, *International Journal of Mathematics and Computer Research*, 11(8) (2023) 3680-3684. DOI:10.47191/ijmcr/v11i8.08.
33. V.R.Kulli, Sum and product connectivity Gouravs domination indices of graphs, *International Journal of Mathematics and Statistics Invention*, 11(4) (2023) 35-43. DOI:10.35629/4767-11043543.
34. V.R.Kulli, On hyper Gourava domination indices, *International Journal of Engineering Sciences & Research Technology*, 12(10) (2023) 12-20. DOI: 10.5281/zenodo.10036777.
35. K.G.Mirajkar and B.Pooja, On Gourava indices of som chemical graphs, *International Journal of Applied Engineering research*, 14(3) (2019) 743-749.
36. P.Poojary, A.Raghavendra, B.G.Shenoy, M.R.Farahani and B.Sooranarayana, Certain topological indices and polynomials for the Isaac graphs, *Journal of Discrete Mathematical Sciences & Cryptography*, 24(2) (2021) 511-525.
37. Qi-Zhao Li, A.Virk, K.Nazar, I.Ahmed and I.Tlili, Valency based descriptors for silicon carbides bismuth (III) iodide and dendrimers in drug applications, *Journal of Chemistry*, vol. 2020, article ID 8616309, 17 pages.
38. M.C.Shanmukha, K.N.Anilkumar, N.S.Basavarajappa and K.M.Niranjan, Topological indices on properties of line graph of subdivision of plane graphs, *Advances in Mathematics: Scientific Journal* 9(4) (2020) 2121-2135.
39. Y.Wang, S.Kanwal, M.Liaqat, A.Asalam and U.Bashir, On second Gourava invariant for q-apex trees, *Journal of Chemistry*, vol. 2022, Article ID 7513770, 7 pages.
40. V.R.Kulli, New direction in the theory of graph index in graphs, *International Journal of Engineering Sciences & Research Technology*, 11(12) (2022) 1-8. DOI: 10.5281/zenodo.7505790.

41. V.R.Kulli, Computation of arithmetic-geometric Revan indices of certain benzenoid systems, *Journal of Global Research in Mathematical Archives*, 5(8) (2018) 8-13.
42. V.R.Kulli, Some new status neighborhood indices of graphs, *International Journal of Mathematics Trends and Technology*, 66(9) (2020) 139-153.
43. V.R.Kulli and I.Gutman, (a, b) -KA indices of benzenoid systems and phenylenes: The general case, *International Journal of Mathematics Trends and Technology*, 67(1) (2021) 17-20. <https://doi.org/10.14445/22315373/IJMTT-V67I1P503>.